

Case Study

SBC SwitchBoard Configurator

The electrotechnical industry, is a complex cooperation of designers, switchboard manufacturers, panel builders, commercial and sales team, they all look on the same problem from different perspective. There is need of smooth operation and easy access to available solutions in aspect of specific type of user.

This is how idea to create support application was born. Program that would support selection and proper configuration of low voltage switchboards using Eaton Electric products, become must have for designers and sales activities.

REQUIREMENTS



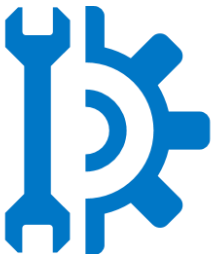
- ✓ Allow designers to build monoline scheme based on selected switchgear assortment
- ✓ Guide and helps user to choose correct system solution, present ready to use solutions or propose advance
- ✓ Present a visualization of chosen and configured switchgear
- ✓ Enable customization of chosen Solutions based on customer needs
- ✓ Maintain control over correctness of component selection for specific switchgear
- ✓ Generate procurement and project documentation
- ✓ Integration and Data exchange with other applications (CAD, Excel)

CHALLENGES



- ✓ Customer needs analysis in the field of switchgear configuration
- ✓ Describe and implement configuration rules to automate item selection, streamline and shorten user work time
- ✓ Design User Interface that would give proper User Experience.
- ✓ Develop CAD drawings (views of switchboard, appliances, electrical symbols)
- ✓ Prepare design, procurement and plan documentation templates

PROCESS

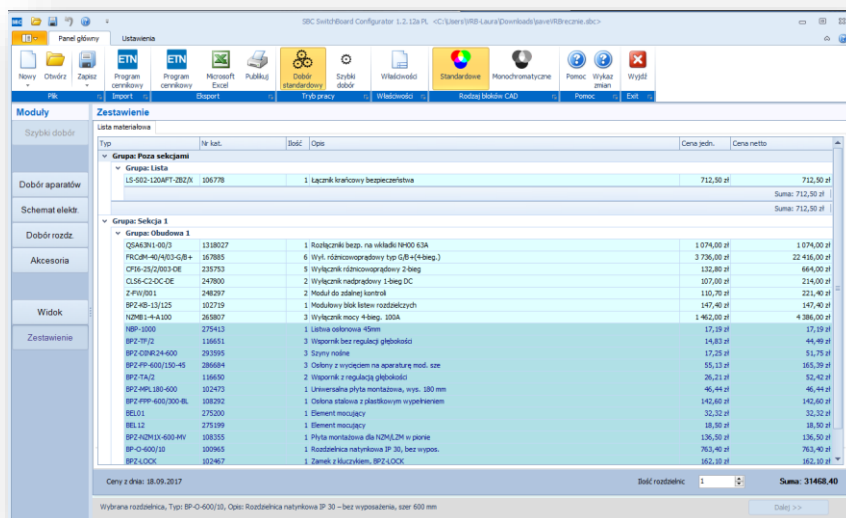
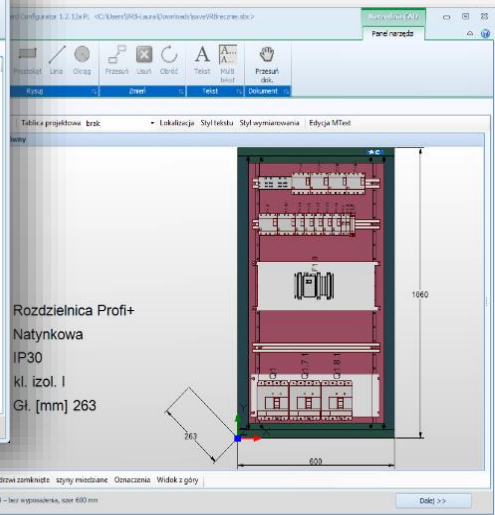
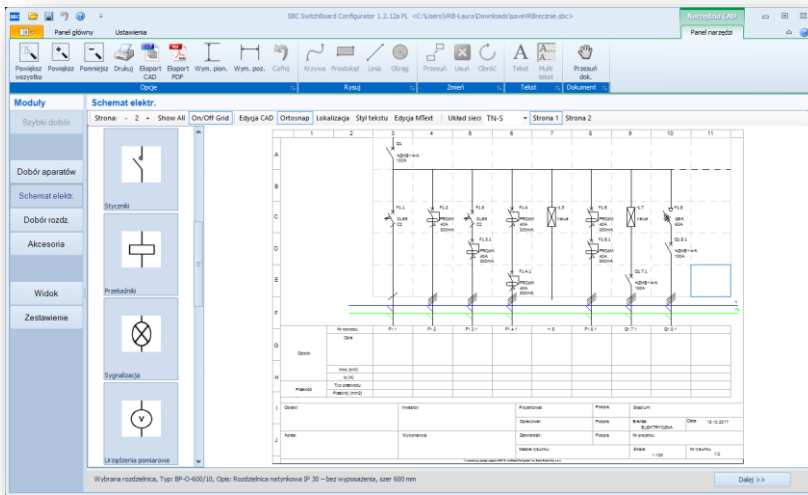
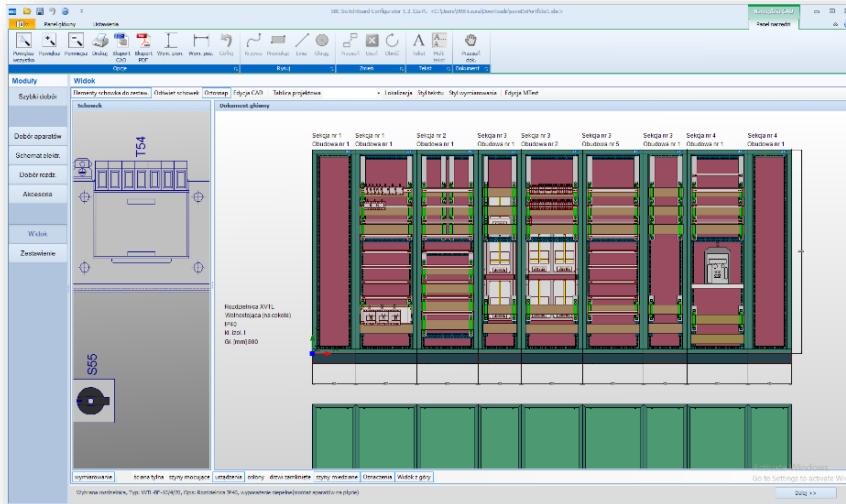


- ✓ Design and implement relationship database (total of 50 000 records in 70 tables). Database should include logical connections of elements and design rules for easiness of maintenance
- ✓ Develop way above 6 000 CAD parameterized drawings (switchboard views, monoline symbols, all in both monochromatic and color versions)

EFFECTS



- ✓ 5 500 registered users
- ✓ Fast and both way exchange of information between customer and sales representative
- ✓ Smarter and efficient analysis of selected switchboard configurations sent by clients
- ✓ Elimination and minimalization of ordering errors
- ✓ Increase of interest and customer engagement in Eaton product offer



ABOUT CLIENT



Eaton Corporation located in Poland has three manufacturing plants and two sales branches. Eaton is global leader in electrical, hydraulic and mechanic system and solutions. Globally hiring over 96 000 people in more than 175 countries.

ABOUT XERGO



Xergo is based in Wrocław engineering software development company. Offered services include software development, like CAE applications, configuration tools (with different level of complexity). We focus on engineering domain and are able to provide, high detail Revit families block development (RFA) and Revit Add-ins.

